

# REWALL 33B

## ACOUSTIC INSULATION FOR WALLS



HIGH PERFORMANCE ACOUSTIC AND THERMAL INSULATION PANEL COMPOSED OF POLYESTER FIBRE AND A PLASTERBOARD LAYER

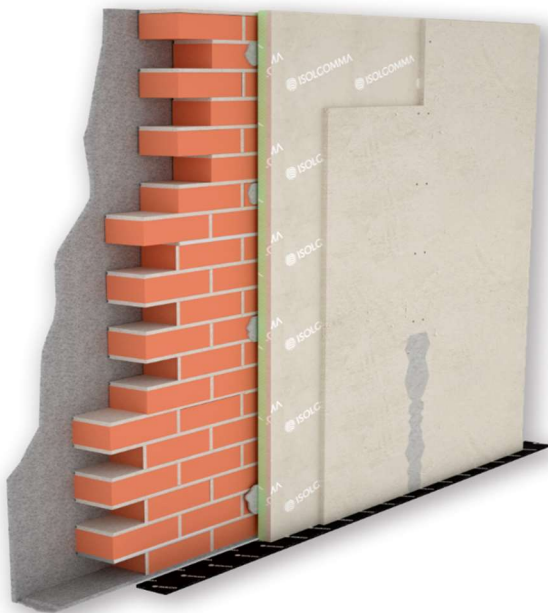


Product Standard  
EN 14190:2014



### ■ TECHNICAL SPECIFICATION

Airborne noise insulation in 33 mm-thick pre-assembled panels, made of a 20 mm-thick polyester fiber panel, density of 100 kg/m<sup>3</sup> and a 12.5 mm-thick plasterboard slab. The panels dimensions are 1.20 m width x 2.00 m length.



### ■ CERTIFIED ACOUSTIC IMPROVEMENT

Product for sound insulation with CE mark, Rewall 33B provides maximum acoustic performance in residential and commercial environments

### ■ FLEXIBILITY

Rewall 33B can be applied to any wall or ceiling with acoustic and vibration-damping functions. High performances in little space. Resistant to moisture

### ■ LAYING COSTS REDUCTION

Supplied already coupled to a plasterboard layer, Rewall 33B ensures rapid and minimally invasive interventions in terms of dirt and dust production in environments

### ■ TO BE USED WITH

In renovations to improve the acoustic performance of existing walls or floors, thanks to its low thickness and comfortable dry laying. Elevator compartments

### ■ TECHNICAL DATA

|                    |                        |
|--------------------|------------------------|
| Thickness          | 33 mm                  |
| Length             | 2,00 m                 |
| Width              | 1,20 m                 |
| Mass per unit area | 10,5 kg/m <sup>2</sup> |

|                      |                          |
|----------------------|--------------------------|
| Reaction to fire     | B-s1,d0                  |
| Thermal resistance R | 0,688 m <sup>2</sup> K/W |
| Transmission Loss Rw | 55 dB                    |

Wall composition - 165 mm thickness  
Coating made with Rewall 33B + 12.5 mm plasterboard on 120 mm brick wall



# REWALL 33B

## ACOUSTIC INSULATION FOR WALLS

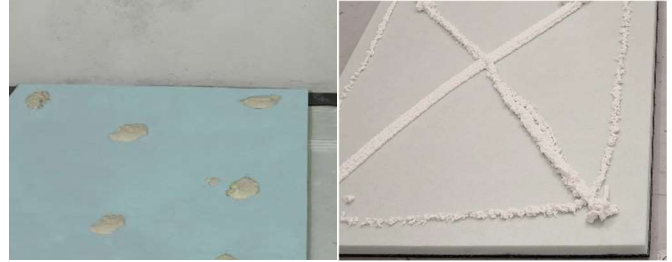


### INSTALLATION INSTRUCTIONS FOR ACOUSTIC INSULATION FOR WALLS REWALL 33B

**1** Lay the under wall stripe



**2** Lay points of a gypsum-based glue on the ground panel or use a low-expansion polyurethane glue



**3** Glue the panel to the wall pressing lightly



**4** Attach two safety plugs to the top of the panel



**5** Fix the second gypsum board with the glue and/or appropriate screws



**6** Apply the plastic mesh tape in the gypsum boards jointing lines. Grouting



**ACOUSTIC CERTIFICATES**  
Product acoustic certificates are available and allow to comply with the limits imposed by law



**INSTALLATION TEST**  
Acoustic performances of the intervention can be tested on site by a competent technician



**ACOUSTIC REPORT**  
Our technical staff is able to give you the proper support in all the project phases, supporting you in the identification of materials



**LAYING ASSISTANCE**  
Thanks to our extensive commercial technicians network, we are at your disposal for the coordination of the first laying phases on site

[SEE THE REFERENCES > VISIT THE WEBSITE](#)

[CONTACT THE TECHNICAL DEPARTMENT FOR MORE INFORMATION](#)



www.isolgomma.com  
PRG-MOD. 15 - REV. 5.0 01/07/21 EN

© Isolgomma Srl. The data and images are indicative and can be changed at any time without notice

